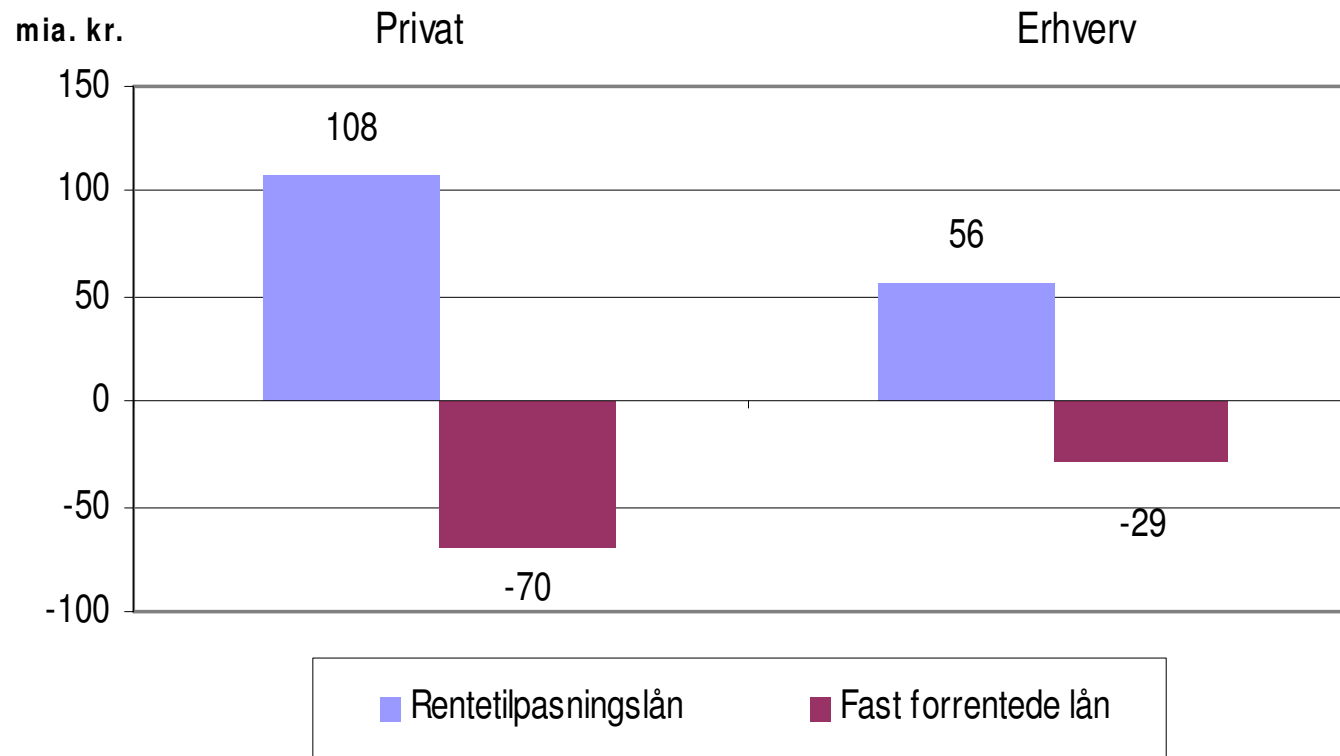


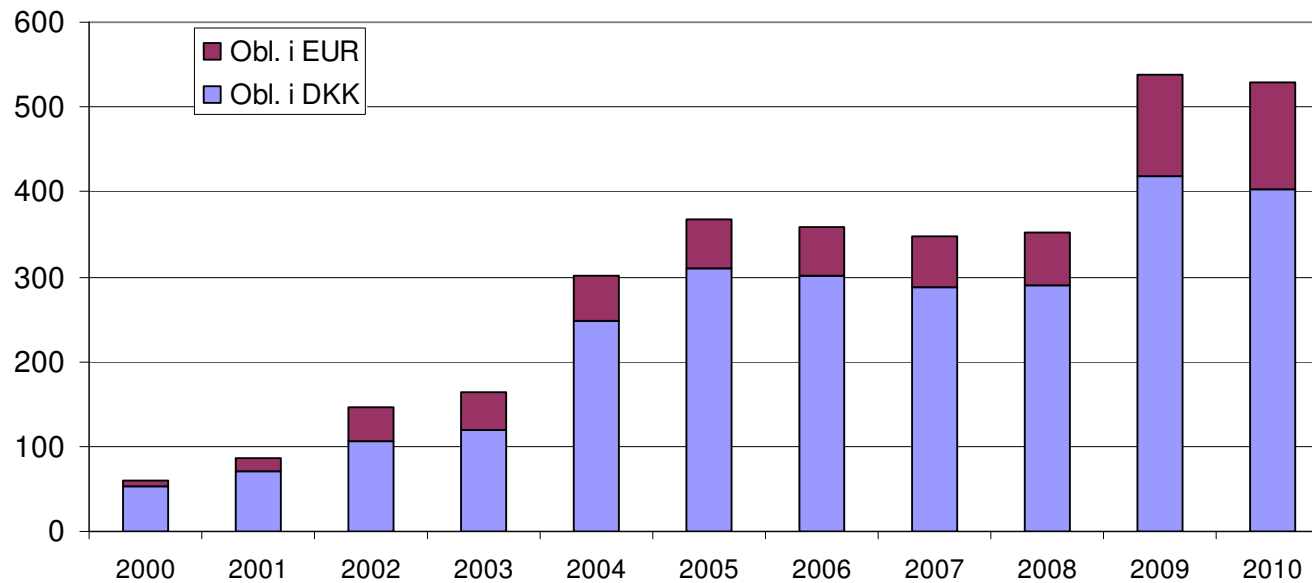
Årsmøde 2011

Ændring i samlet udlånsportefølje i 2010

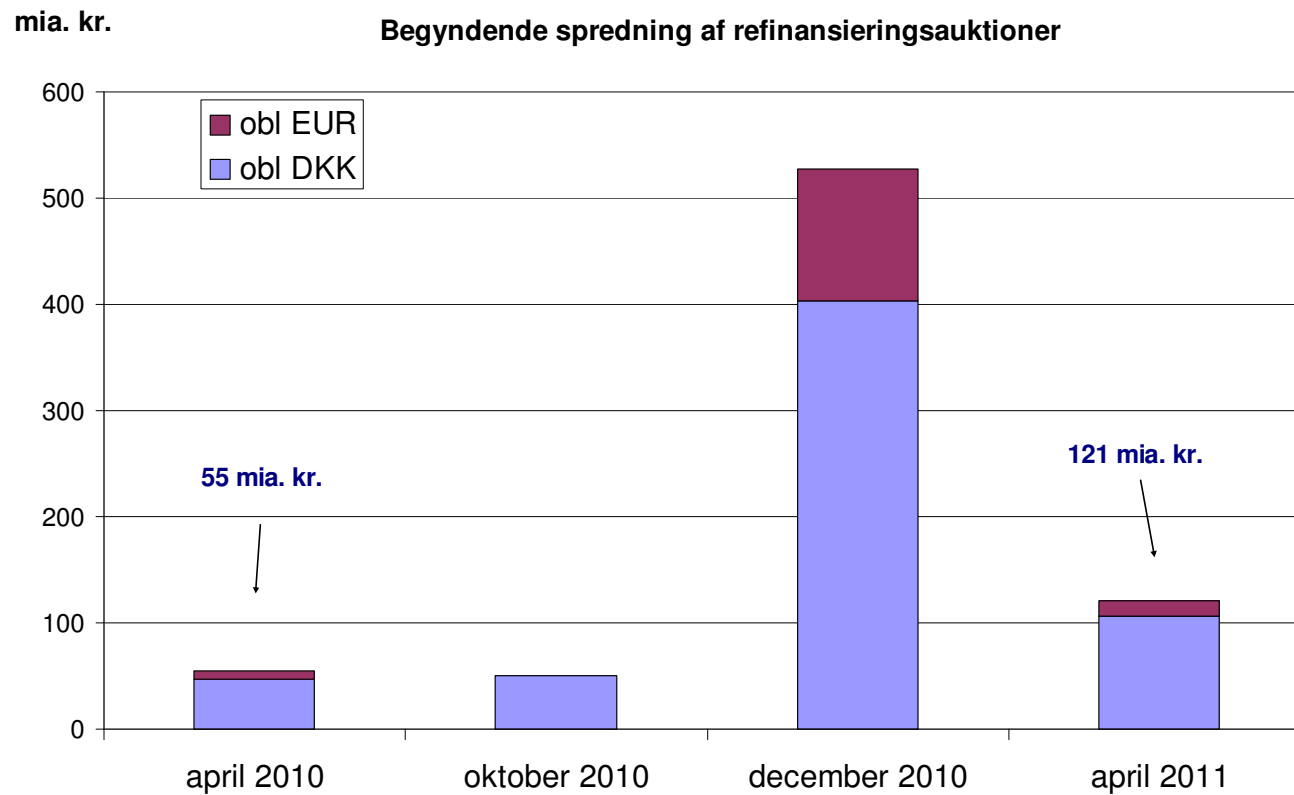


Refinansieringsauktioner i december

mia. DKK



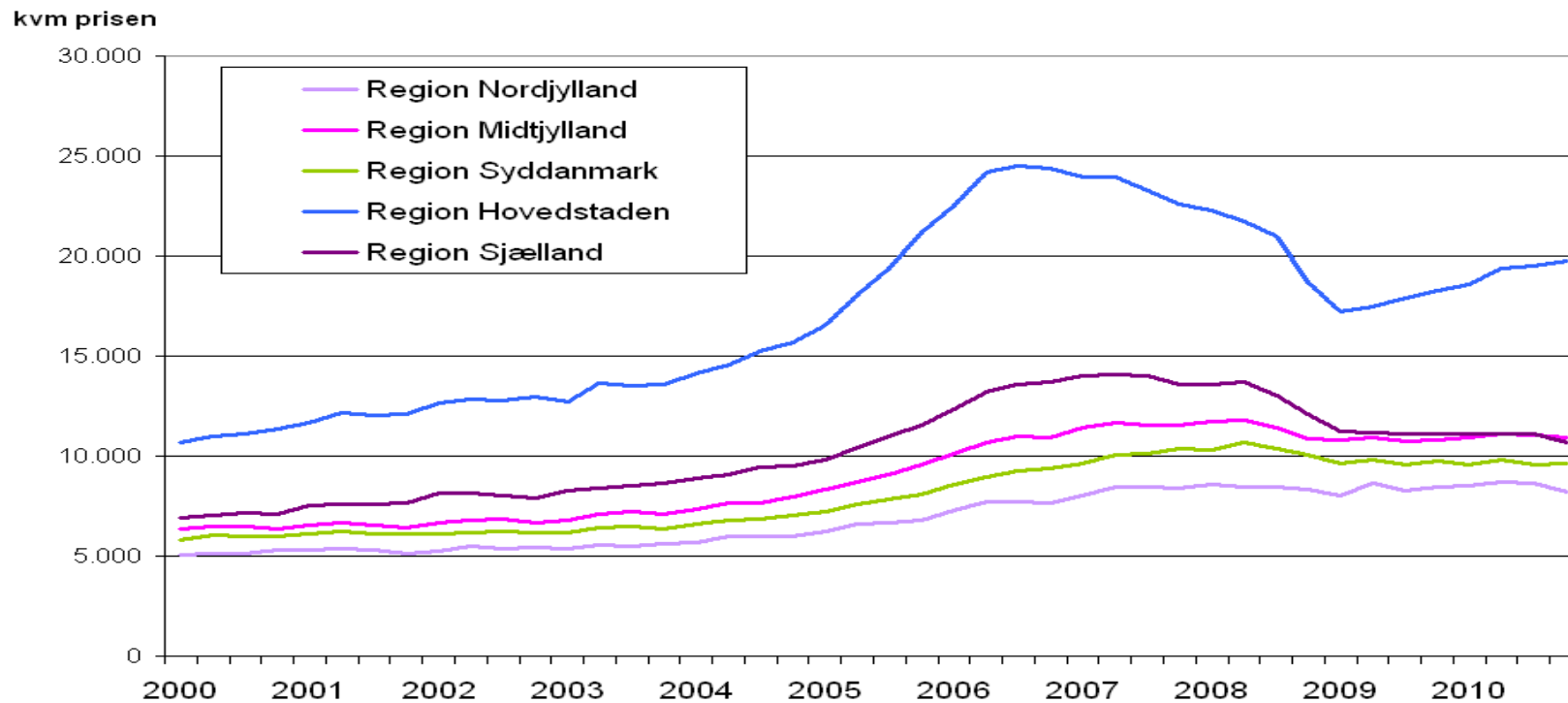
April auktion fordoblet siden sidste år

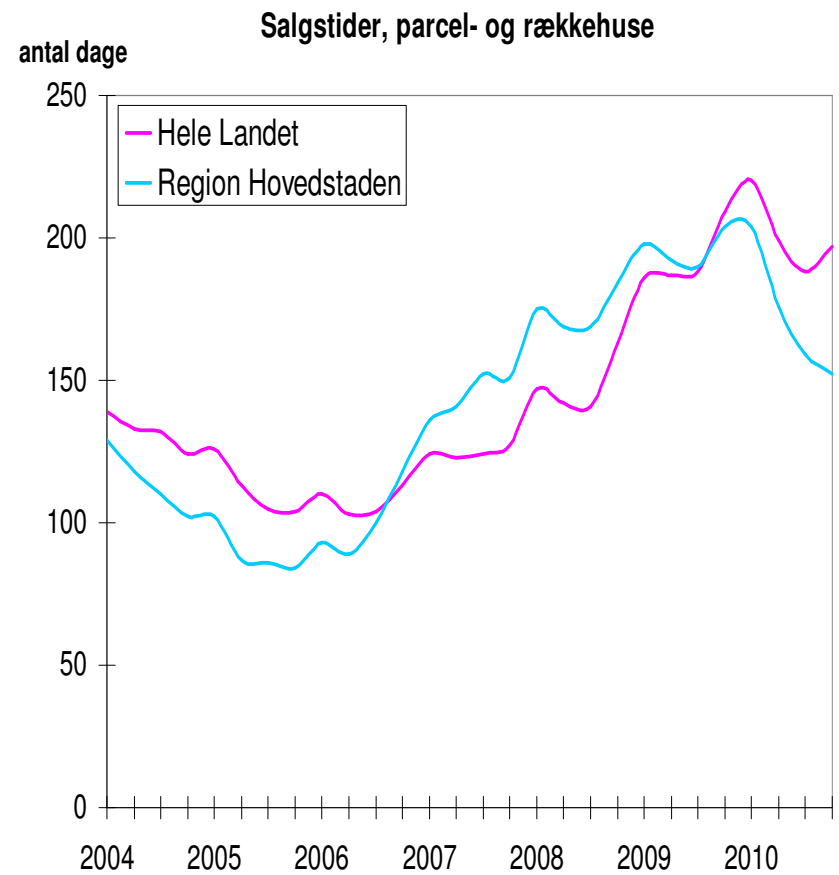
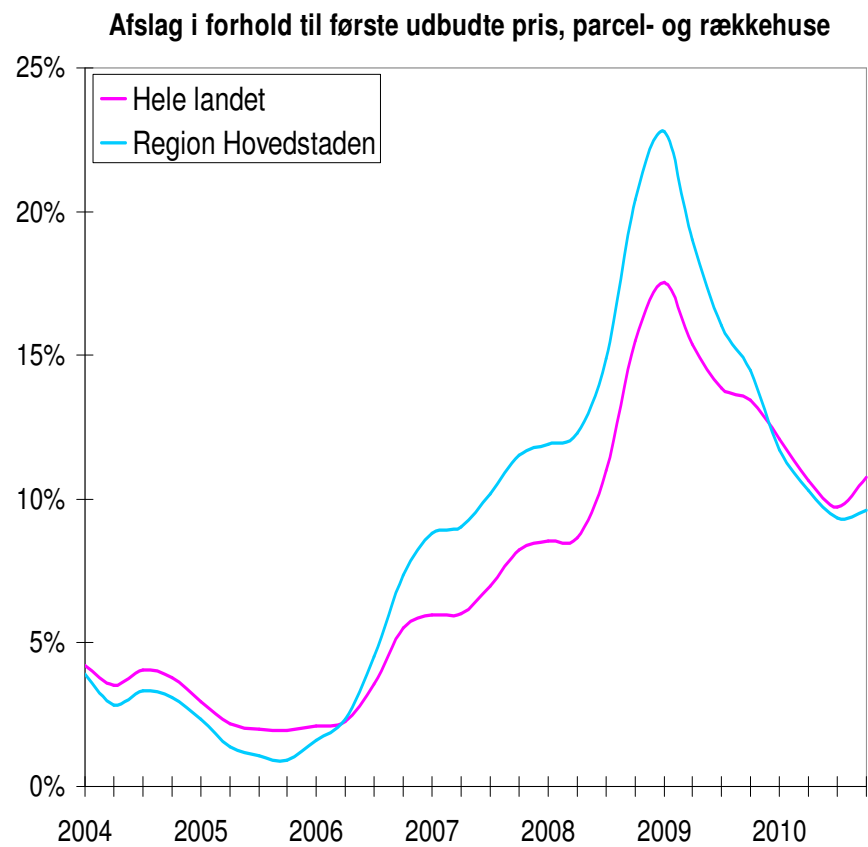


Beskeden fremgang i antallet af handler

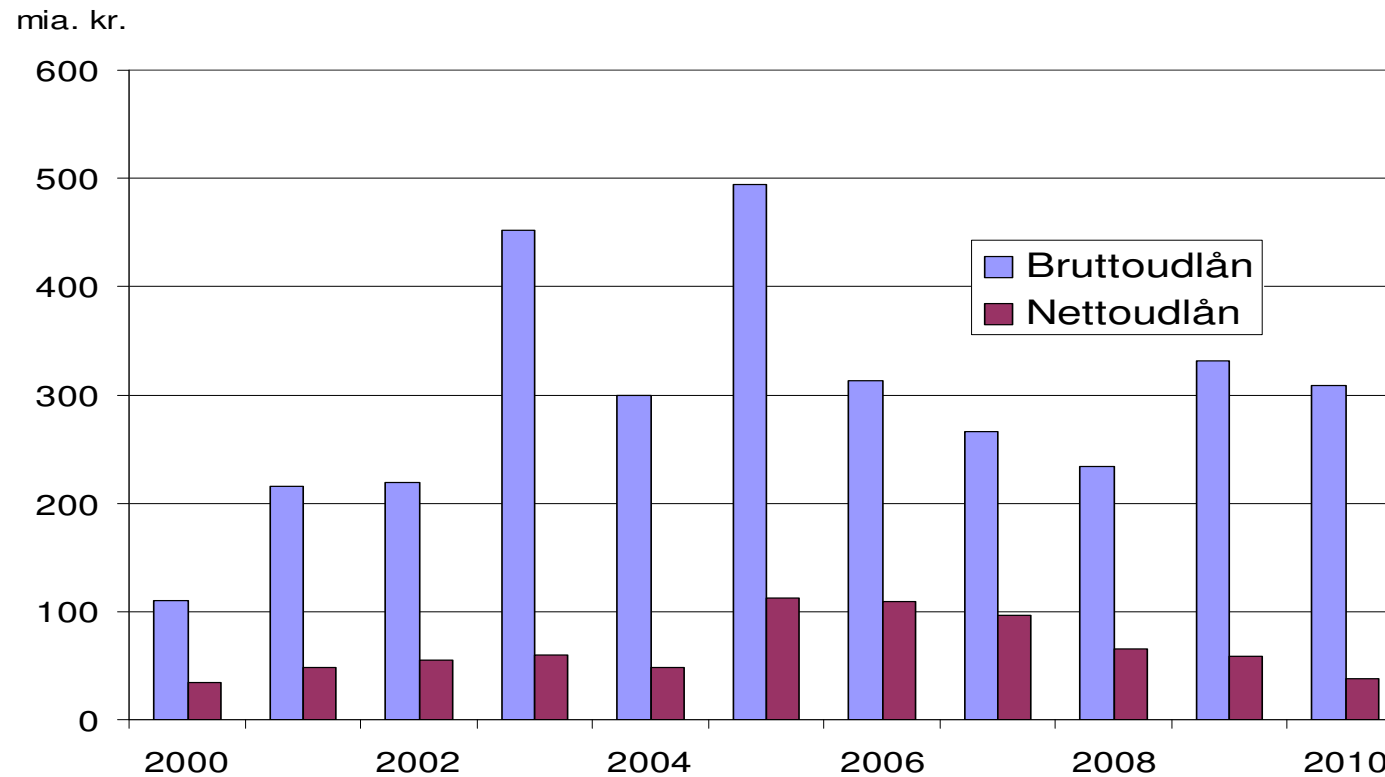


Priser: Stigning i Region Hovedstaden, uændrede i de øvrige regioner

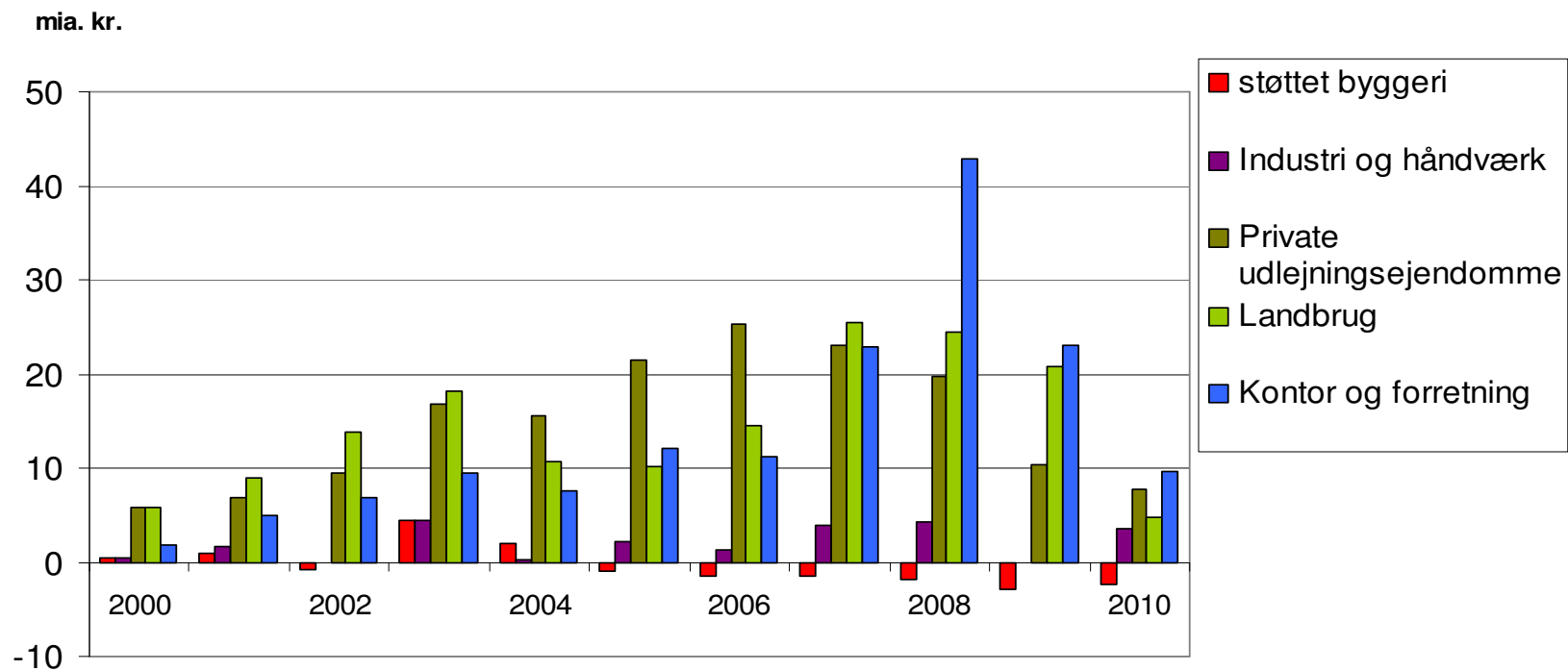




Fortsat højt bruttoudlån – men lavt nettoudlån til ejerboliger



Faldende nettoudlån til erhverv



Faldende restanceprocent

